

*The Senior Class*  
*of 1967*  
*presents*

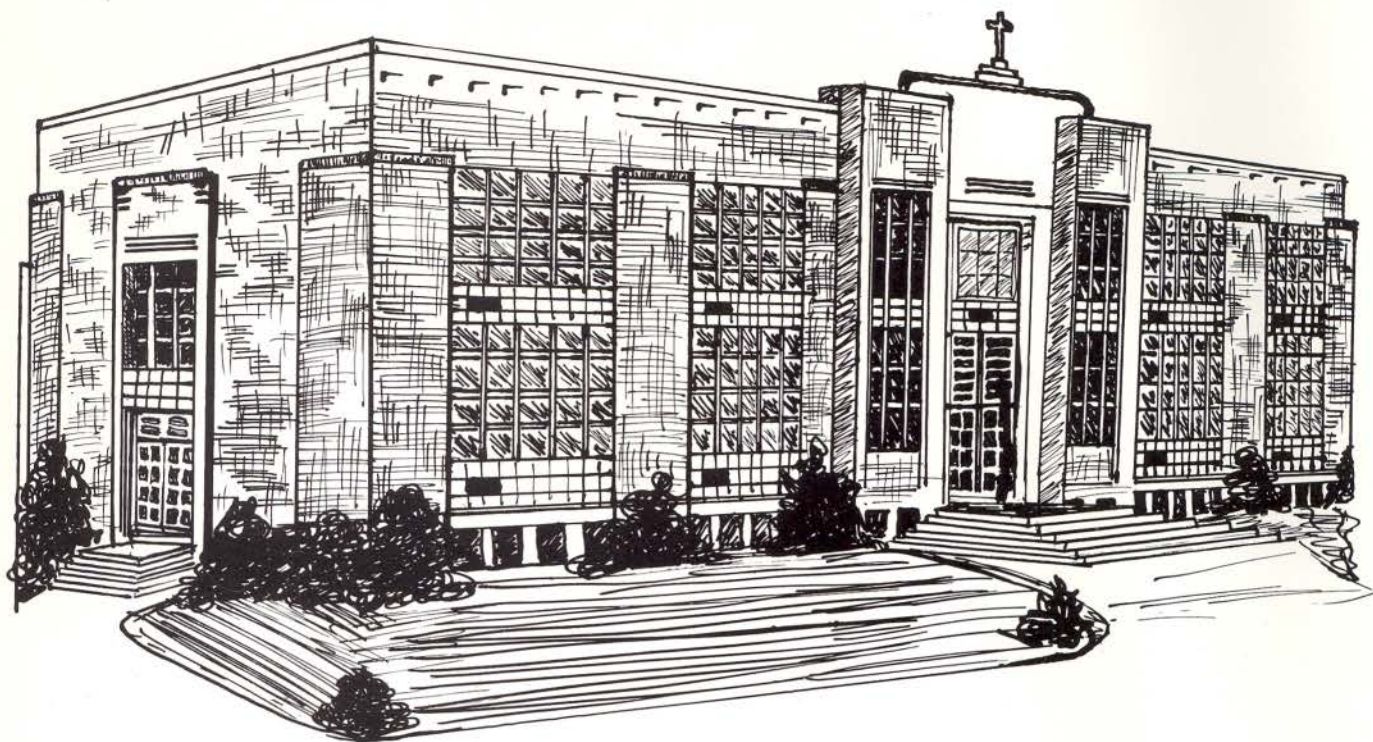


# *The Traveler*

**St. Joseph Central High School**

**MAPLEWOOD AVENUE**

**PITTSFIELD, MASSACHUSETTS**



## CONTENTS

<i>Introduction</i> .....	<b>3</b>
<i>In Memoriam</i> .....	<b>4</b>
<i>Classes</i> .....	<b>5</b>
<i>Organizations</i> .....	<b>11</b>
<i>Graduates</i> .....	<b>17</b>
<i>Activities</i> .....	<b>43</b>
<i>Sports</i> .....	<b>49</b>



# FOREWORD

On September 4, 1963 our journey began. With the launching ceremony aboard the U.S.S. Crusader, we dedicated our voyage to St. Joseph, asking him to guide our actions and to continually keep us in his care. With this feeling of protection, we anxiously and excitedly boarded the ship!

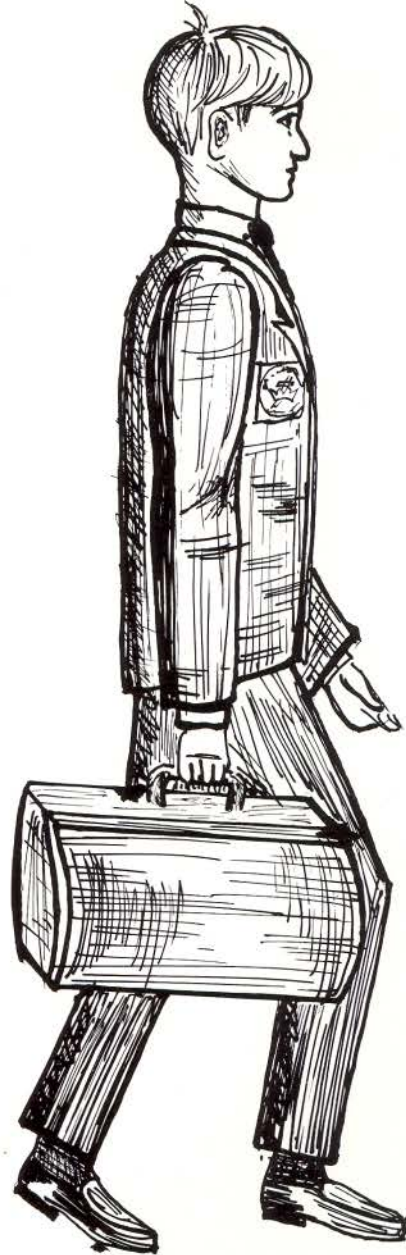
As Freshmen we became a unified body and prepared to face the challenges ahead of us. The seas were rough as we sailed into Sophomore year. Loyalty to others, honesty, and integrity were the propellers which guided us through these high seas. Our goals loomed before us as we entered Junior year. Faithfulness and fortitude enabled us to endure the hardships we encountered this year. Loyalty to our fellow travelers brought us into our Senior year. As this year began land was sighted. Our journey was nearly over. As a result of our teamwork and individual effort as well as the help of our captain and our officers, our goal, the attainment of knowledge and skill, has been reached.

We came into port on June 15, 1967. Our maiden voyage was over. Commencement Day brought it to an end. However, for us individually it was another beginning. No longer a crew of 140 travelers, we are separately approaching new horizons. With God's love and care we will attain our separate goals and meet new challenges.

Bon Voyage, Seniors!

## Editors:

June Marketonis  
Patricia Nicklaw  
Marilyn Roulier  
Mary Toole



# *In Memoriam*



James Patrick McGurk

He's gone from us now,  
But he's not far away  
He's with us, you know,  
In our thoughts every day.

He fought for justice,  
True to his kind,  
He was strong and steadfast  
In both body and mind.

He was there when needed  
With a helping hand,  
He was generous and willing.  
He was our kind of man.

As we leave these halls,  
We'll never forget him  
Instead we'll smile  
And say, "Thanks a lot, Jim."

Cheryl McConnell



*A Traveler am I . . .*

**C**

**L**

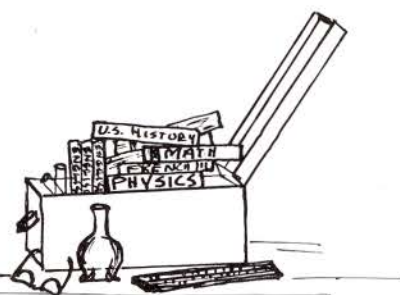
**A**

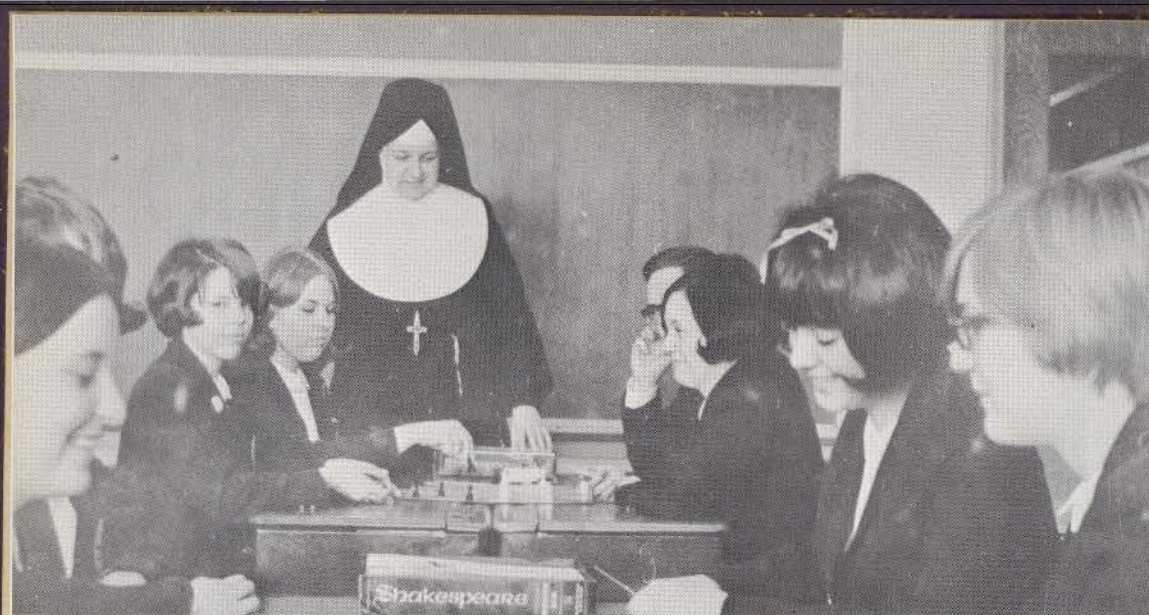
**S**

**S**

**E**

**S**





Sister Wilfred Marie watches as one of her English classes plays the game of "Shakespeare"



Students ponder over the Thursday History test as Sister Cecilia James looks on.

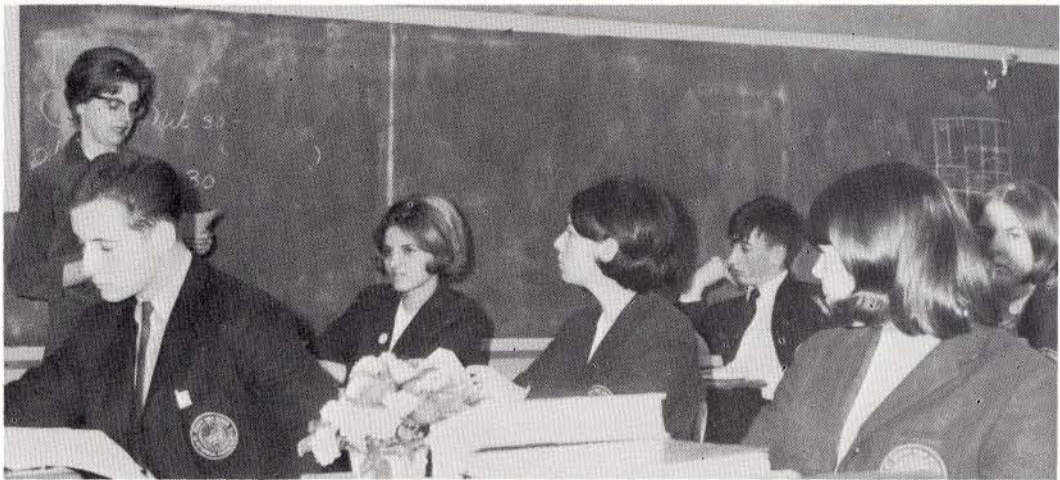
D. Bazinet, L. Theoret, S. Bramley, A. Monette, D. Reardon, and J. Haughey are kept busy in Office Practice.



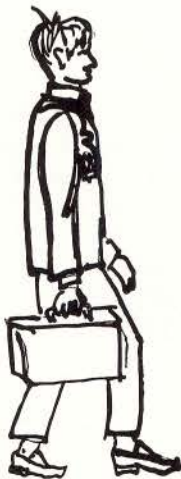




Students listen to Sister Raymond Germaine as she explains a problem in Advanced Mathematics.



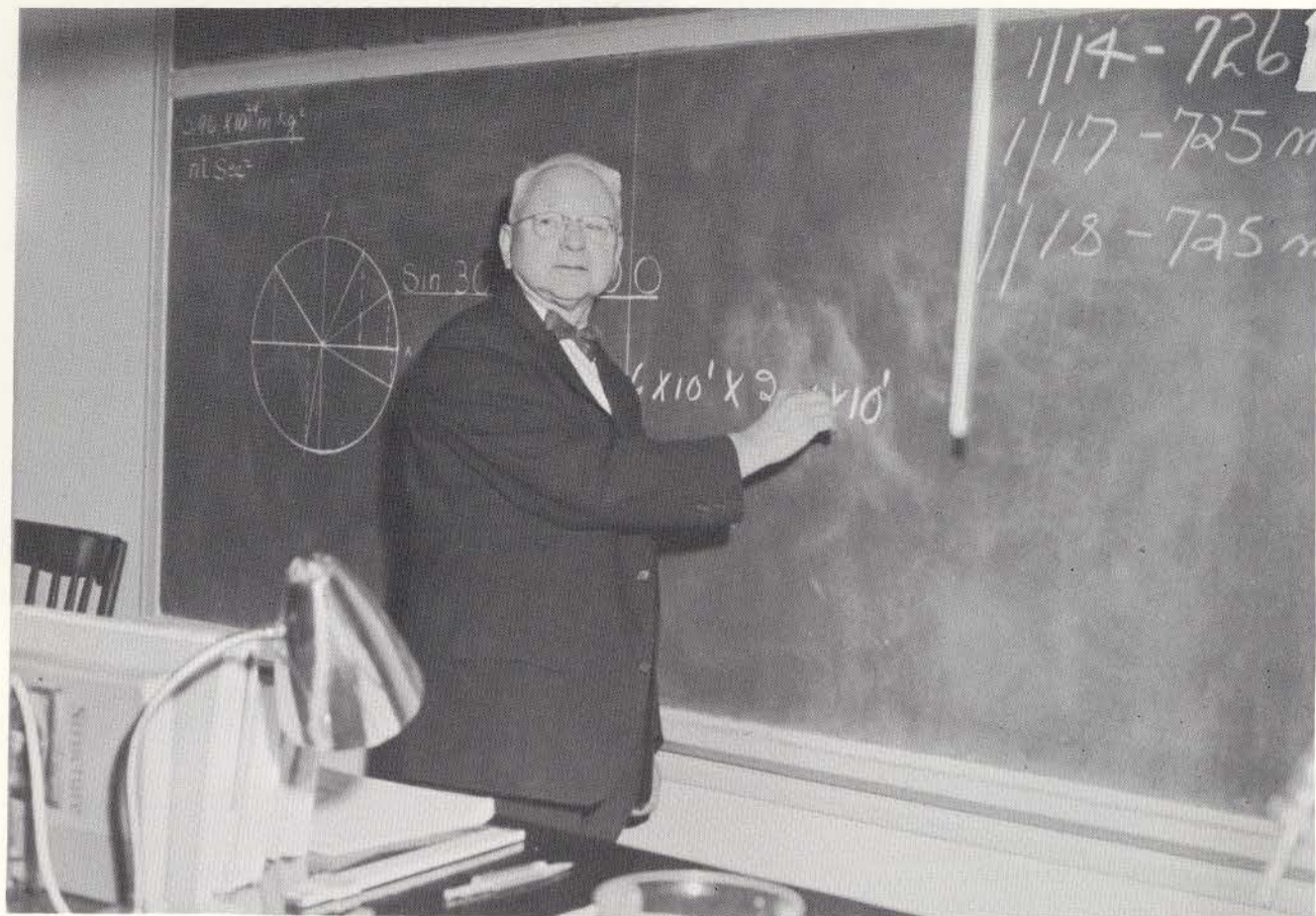
Journalism students pay attention to Mrs. Giardina as she reads instructions to them for an upcoming test.



Seniors Mary Toole, Catherine Kelly, Stephen St. Peter, Christine Jones, Michael Connally, and Michael Fiorini listen to Sister Mary Anita as she explains the use of the geiger counter.







Mr. Hamilton is explaining a problem to his physics class.



Sister Rose Helen is teaching Library Orientation in the new Audio - Visual Room.





During our Junior year we were visited by different schools of higher learning. Here a representative from Chandler School of Business is talking to some students.



As part of the Journalism course, people in this field were asked to talk to the class. Here Mr. Flynn is addressing the students.

## *Class Song*

(Born Free)

Seniors, remember the past years  
And treasure them always  
For we all have to part.

Look back on days to remember  
On days warm and tender  
Look back on life at its start.

Look back when hearts were so willing  
And life was so thrilling  
Our tomorrows seemed so far.

We'll look up, ask God for the future  
Let's ask for His guidance throughout  
our lives.

Yonder the world is awaiting  
The world lies wide open  
For us to follow our dreams.

Knowledge we all have acquired  
Here, we've been inspired  
To aim as high as the Stars

Thankful to know when we leave here  
That all of the Sisters' prayers will  
always be with us

So Seniors, remember the past years  
Continue life with them  
Close to your heart.

Barbara Dwyer  
Michael Herman  
Marilyn Roulier  
Maureen Verchot



O

R

G

A

N

I

Z

A

T

I

O

N

S

*And a Navigator . . .*



Members of the yearbook staff Patricia Nicklaw and June Marketonis, co-editors, look at possible layouts with Marilyn Roulier for "The Traveler."



Shelia Paoli and Barbara Dwyer officers of the newly formed French Club pose for a picture.



Officers of the Student Council Frankie Moorhead, Anne Gerard Flynn, James Robinson, and Lee Senk discuss one of their many problems with their advisors Sister Helen Catherine and Sister Elizabeth Therese.

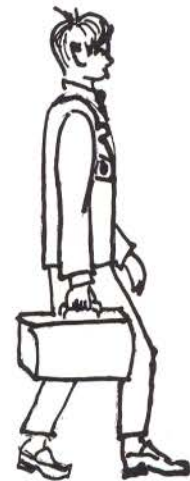




Lynne Shea, Marion Garneau, Pamela Nagle, Maureen Verchot, Patricia Lange, Karen Hamburg, and Carol Touhey play "charades" at a Genesians meeting.



National Honor Society officers Mark Carnevale, Harold Connors, Bette Baumann, and Paula Nassif, pose with their advisor Sister St. Peter for a picture.



Editors Mary Kay Mahoney, Michelle Simon, Ann Wallace, Gloria Miraglia and Anne Flynn work on an issue of the Josephite Echo.





At a Science Club meeting James Barry, Pres.; Sister Mary Anita, Frankie Moorhead, Sec.; and Sister Mary Dorothy view the experiment of a featured guest from G.E.



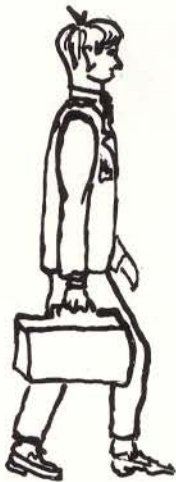
Officers of the Arts Service Club Jay Tobin, Carol Amstutz, Linda Dupuis, Margaret Hayes, look on as Sister Anna Margaret describes the process of enameling.



Officers of the French Club Kevin McCarty, Robert Gogan, Janet Cambell and Theresa Syzmanski read an issue of a French magazine at a meeting.



CLASS OFFICERS Carol Touhey, Michael Herman, Robert Gogan, and Cheryl Mc Connell look over senior class material in the Library.



GLEE CLUB members sing their best at one of this year's school functions.



CHEERLEADERS after one of this years games; STANDING: Cheryl McConnell, Shiela Paoli, Ann McGill, Margaret Sockop. KNEELING: Karen Hamburg, Diane Reardon, Marita Curley, Capt. ; Marilyn Roulier and Patricia Strizzi.

# *Child of Learning*

Class Poem

by

Christine Jones

Freshman year, the dawn of day,  
From our homes away, away!  
Ascend, oh Child, the hill of learning,  
Mold your life around the yearning---  
From ignorance, away.

Sophomore year, the afternoon;  
Leave our cozy little room---  
Climb, oh Child, the ladder skyward;  
Be not arrogant nor wayward;  
Send your heart to God to stay.

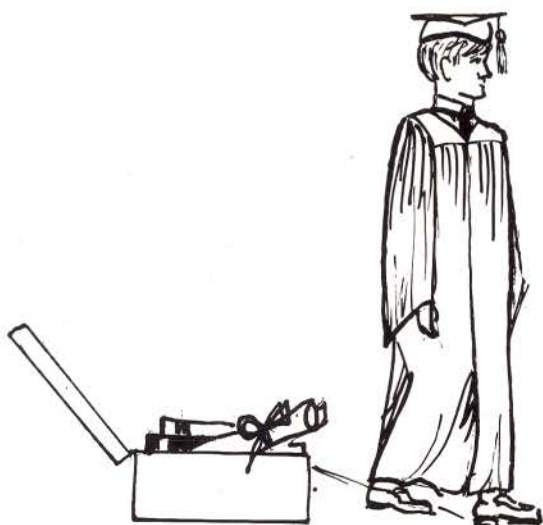
Junior year, the twilight hours;  
We forsake our crusted bowers,  
Fly, oh Child, toward wisdom's height;  
Shun all wrong, absorb all right;  
Soar beyond all childish play.

Senior year, the brightest evening;  
Growing homefires we are leaving---  
Now the silver moon's in sight;  
Grasp your goal and hold it tight.  
Glance behind at steeple tall,  
Beloved teachers, familiar hall;  
Child, you think your wisdom's won,  
But your learning's just begun.



*. . . And everyday I  
discover a new region  
within my soul.*

**G  
R  
A  
D  
U  
A  
T  
E  
S**



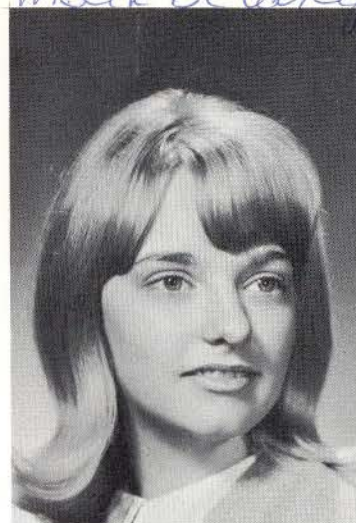
Art Service Club 3, 4. (Pres.);  
Glee Club 3, 4, Musical 4; Prom  
Com. 4; Pep Club 4.

Genesians 2; Glee Club 4; Library  
Assistant 4.



Carol Jo Amstutz

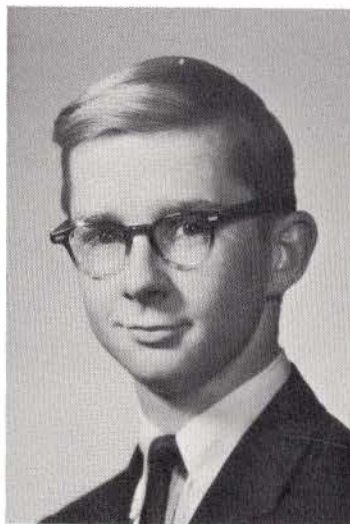
married to  
Mark Belanger



Daryl Anne Apple

Debating 3, 4; Genesians 1, 2, 4;  
Glee Club 1, 3, 4; National Honor  
Society 4; Science Club 1, 2, 3, 4,  
(Pres.); Student Council 1, 2.

Genesians 3, 4; National Honor  
Society 3, 4, (Vice-Pres.); Reflec-  
tions 2, 3, 4; Glee Club 2, 3; Mem-  
ory Book 4; Student Council 3, 4.



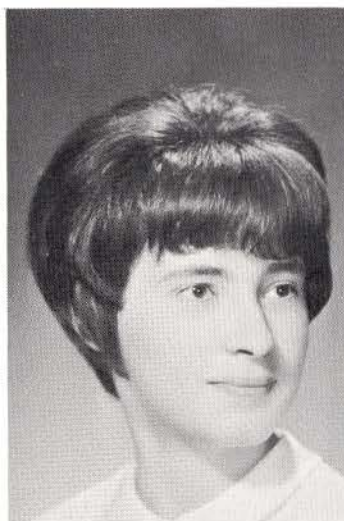
James Andrew Barry



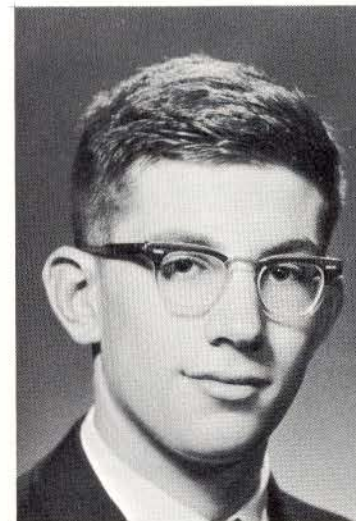
Bette Ann Baumann

Glee Club 3.

Science Club 3; Spanish Club 2, 3.

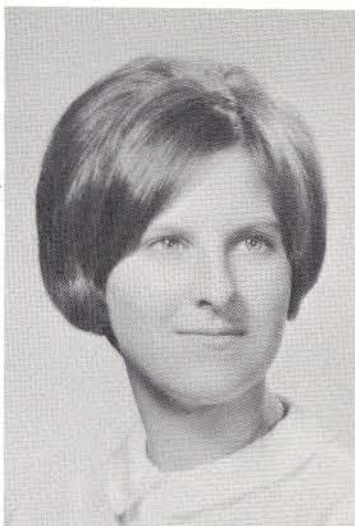


Donna Marie Bazinet



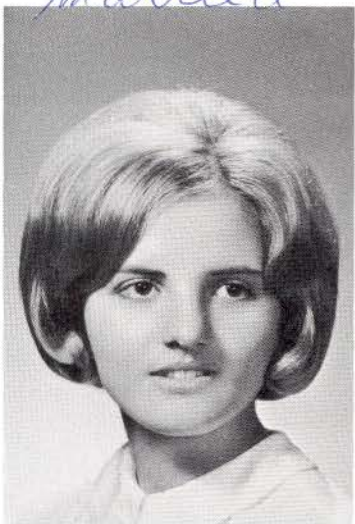
Stephen William Beresk



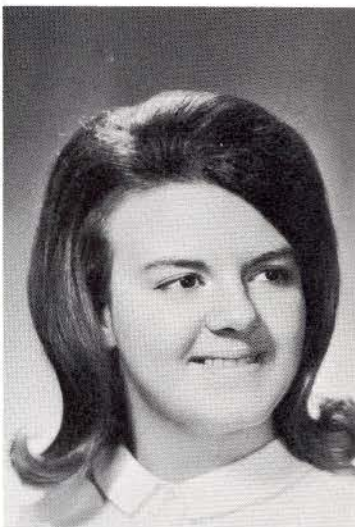


Kathleen Anne Bissailon

*married*



Sandra Dolores Bramley



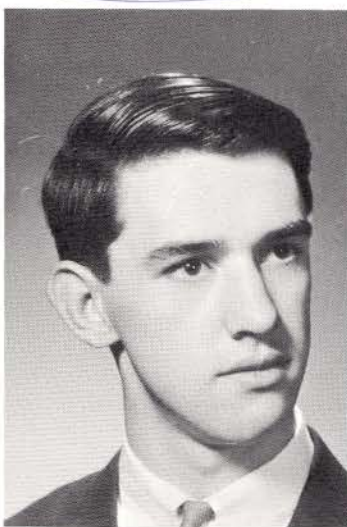
Melanie Susan Burk



Lorraine Marschall Bradford



Diane Marie Bruno



John Bernard Burke

Glee Club 4; Science Club 2;  
Reflections 2, 3; French Club 3;  
Musical 4.

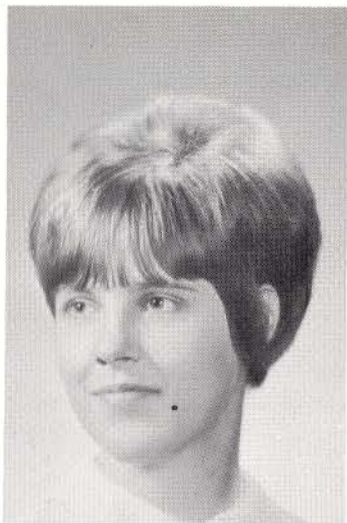
Art Service Club 2; Genesians 4;  
Musical 4; Science Club 4.

Glee Club 4; Echo 4; Musical 4;  
Prom Com. 3.

Echo 4; Pep Club 4.

French Club 4; Glee Club 4; Pep  
Club 4.

Glee Club 3, 4; Musical 4.



Marilyn Anne Burke

Glee Club 1, 2, 3, 4; Art Service Club  
2, 3, 4; French Club 2; Muscial 1, 4;  
Prom Com. 3, 4.

Glee Club 2, 3, 4; Memory Book 4;  
National Honor Society 4; Reflections  
3, 4; Genesians 4; French Club 3, 4.



Maryhelen Elizabeth Butler

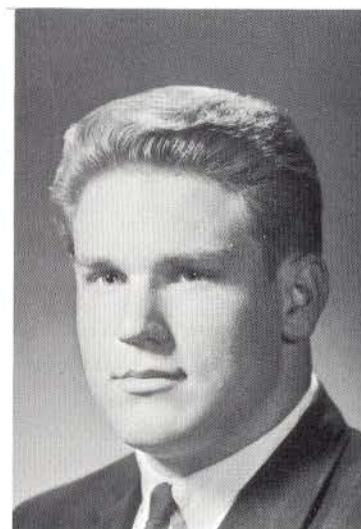


Nancy Anne Buzzanco

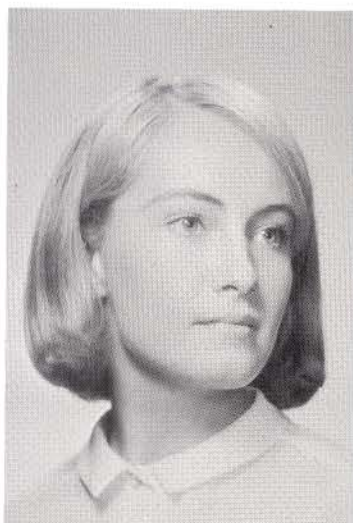
Art Service Club 4; Spanish Club 3.

*July 1969  
married to  
Mike Weber*

Football 1, 2, 3, 4; Jets 4; Debating 3;  
French Club 3.



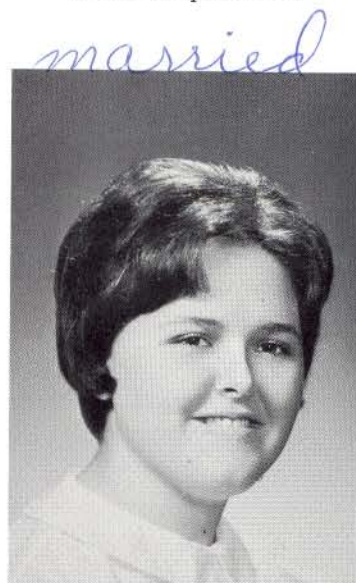
Edward Stephen Cain



Janet Mary Campbell

Glee Club 1, 2, 3, 4; National Honor  
Society 3, 4; Science Club 2, 3, 4; French  
Club 2, 3, 4; Art Service Club 3, 4;  
Memory Book 4.

Art Service Club 4; Prom Com. 4.



Barbara Ellen Carmel

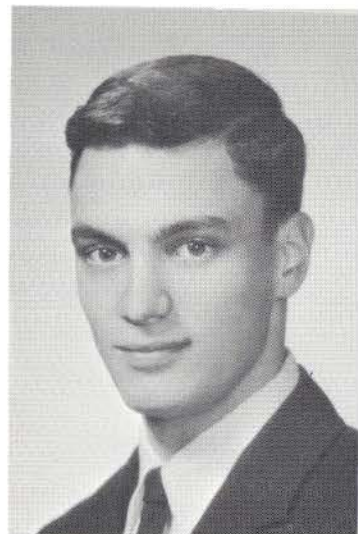




Roberta Jean Carmel

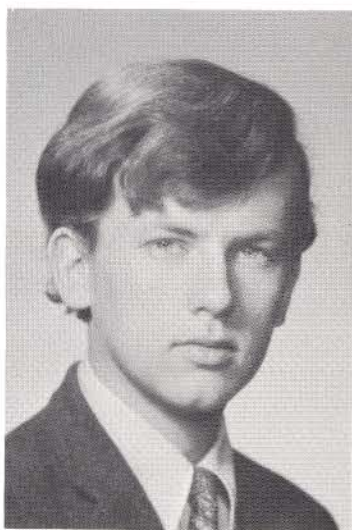
Glee Club 1, 2, 4; Genesians 4; Reflections 4; Echo 4; Art Service Club 4; French Club 3.

National Honor Society 3, 4, (Pres.); Science Club 3, 4; Student Council 3, 4; Jets 4; Class Officer 3, (Pres.); Debating 4.



Mark Francis Carnevale

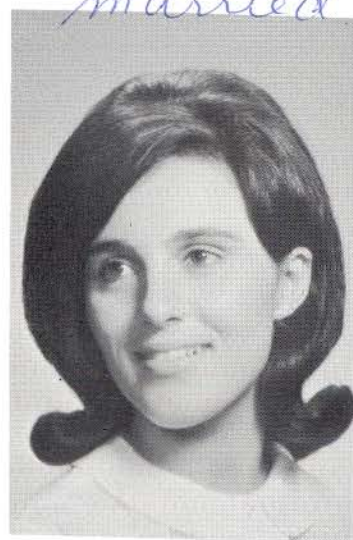
*married*



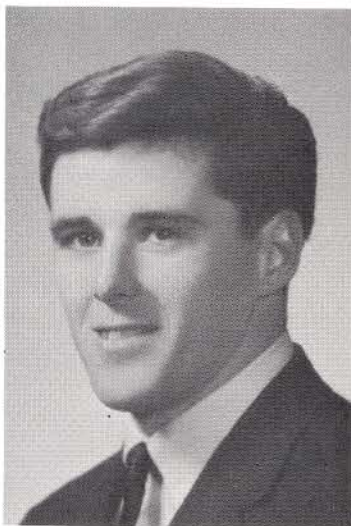
David Maurice Carron

Prom Com. 3.

Spanish Club 3, (Treas.); Glee Club 4; Art Service Club 4; Prom Com. 3, 4; Pep Club 4.



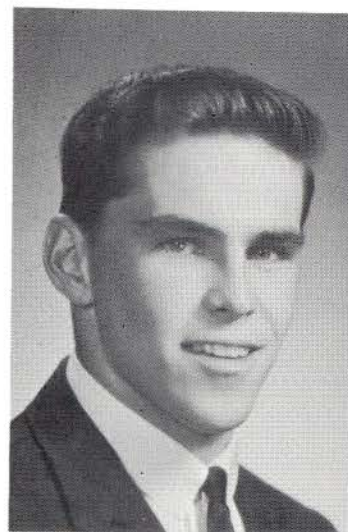
Helen Agnes Casey



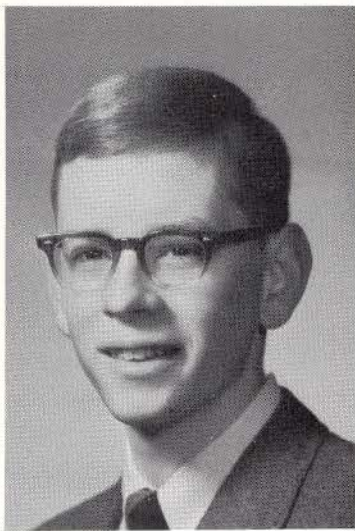
James Michael Clark

Football 1, 2, 3, 4; Basketball 1, 2, 3, 4; Baseball 2.

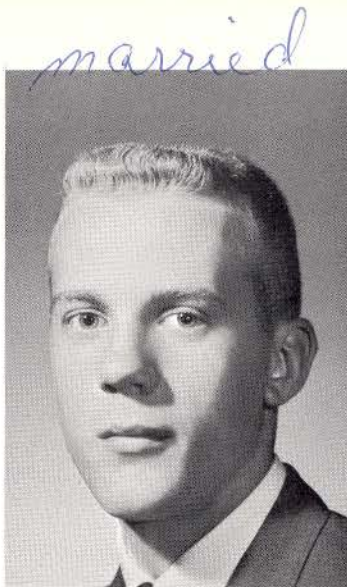
Football 1, 2, 3, 4; Basketball 1, 2, 3, 4; Baseball 1, 2, 3, 4.



John Vincent Clark



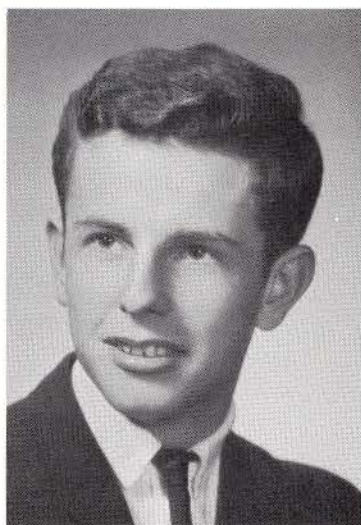
James Joseph Clary



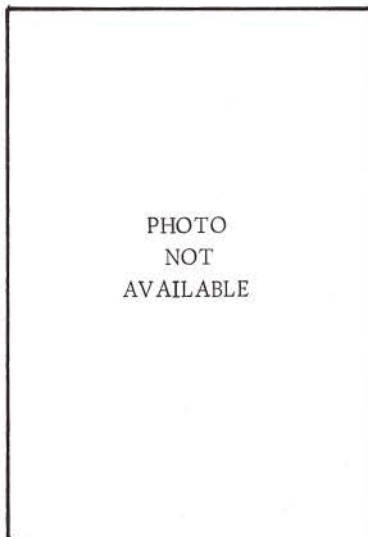
Michael John Collins

Debating 2, 3, 4; Genesians 1, 2;  
Jets 4; Student Council 3, 4; Sci-  
ence Club 3, 4; Musical 4.

French Club 3; Latin Club 1.



William Francis Collins



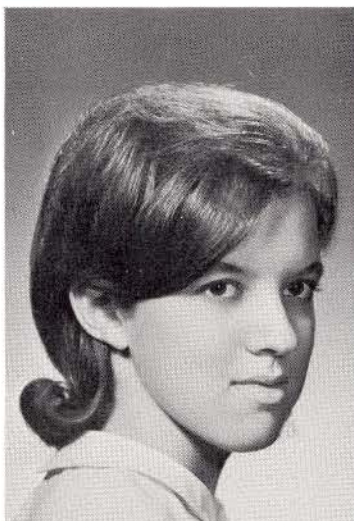
James Anthony Comalli

Football 3, 4; Golf 3, 4; Debating  
2; Baseball 2; Muscial 4.

Prom Com. 3.



Michael Raymond Connally



Cynthia Irene Correia

Baseball 1, 2, 3, 4; Basketball 2, 3,  
4; Football 3, 4.

Glee Club 1, 4; Pep Club 1, 4.



Art Service Club 2; Jets 4.

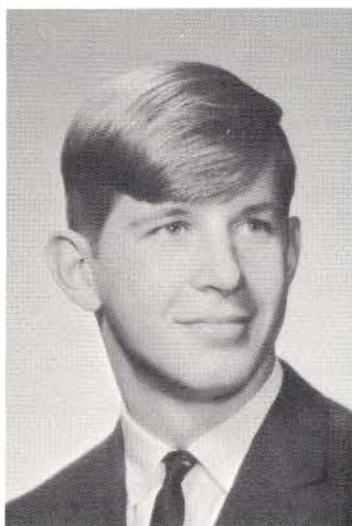
Pep Club 4; Prom Com. 4.

Football 1, 2, 3, 4.

Cheerleading 3, 4, (Capt.); French Club 3; Genesians 3; Pep Club 1, 4; Prom Com. 3, 4.

Football 1; French Club 3, 4; Genesians 4; National Honor Society 3, 4; Science Club 3, 4; Prom Com. 3.

Prom Com. 3.



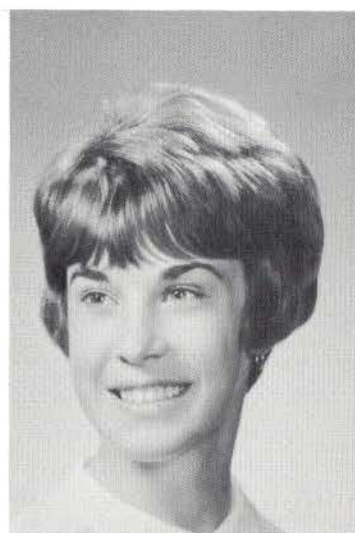
Gerard George Cote



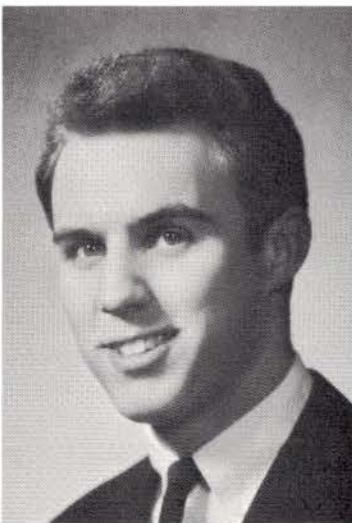
Jon Erwin Crowley



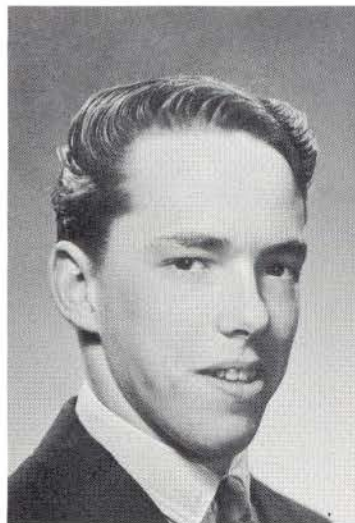
James David Culver



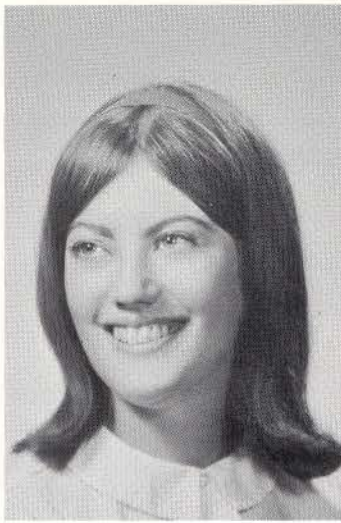
Marita Elizabeth Curley



Anthony Joseph Demick



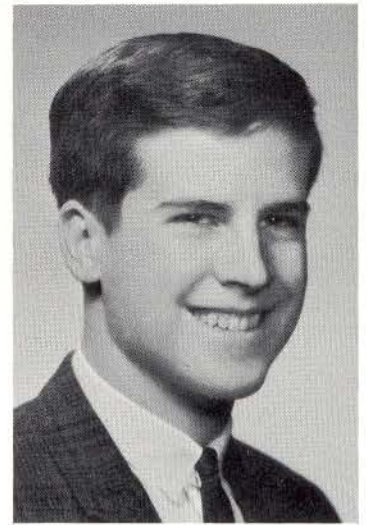
Robert Ernest Devinez



Diane Marie Donovan

Glee Club 1; Pep Club 4.

Baseball 1, 2, 3, 4; Basketball 1, 2, 3, 4;  
French Club 3; National Honor Society  
4; Science Club 2.



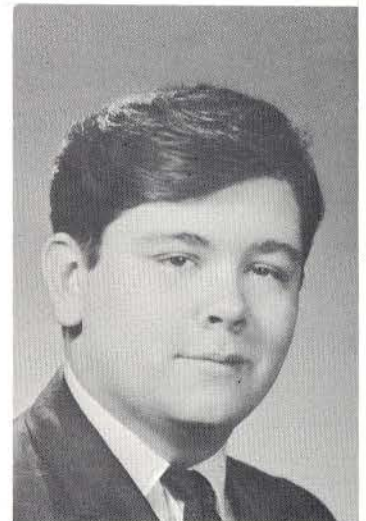
Thomas Patrick Doyle



Jean Marie Drury

Glee Club 1, 4; Echo 4; Pep Club 4;  
Prom Com. 3.

Reflections 2; Prom Com. 4.



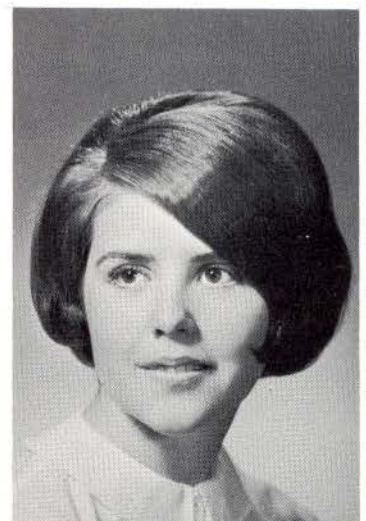
Lawrence Edward Dunham



Linda Mary Dupuis

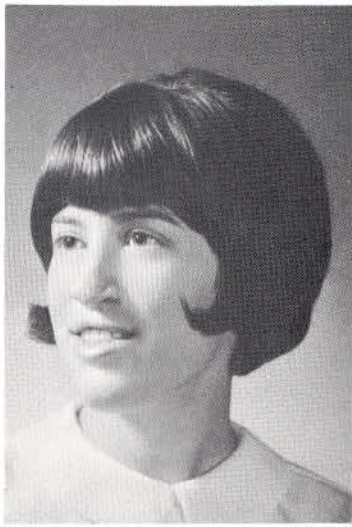
Art Service Club 4, (Sec.); Spanish  
Club 3; Prom Com. 4; Library Ass't. 4.

French Club 3; Glee Club 1, 4; Memory  
Book 4; National Honor Society 4;  
Student Council 3, 4; Musical 4.



Barbara Mary Dwyer

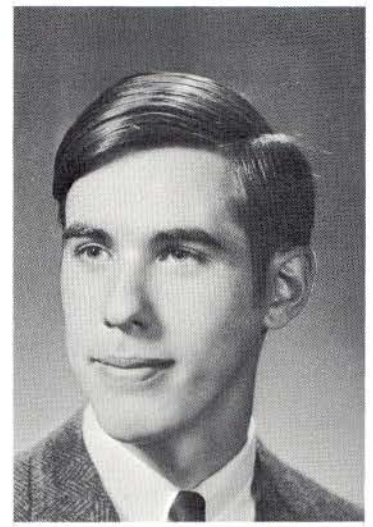




Judith Anne Ewing

Art Service Club 4; Memory Book 4;  
Pep Club 4; Prom Com. 4.

Musical 1.



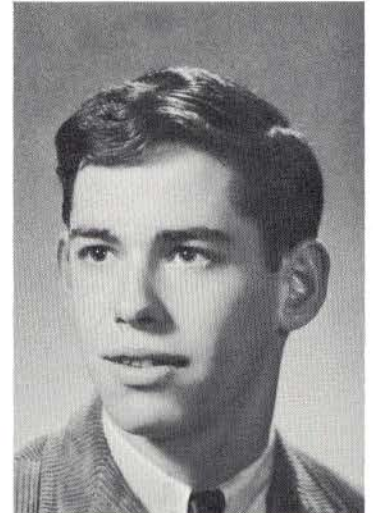
Thomas Mario Filippini



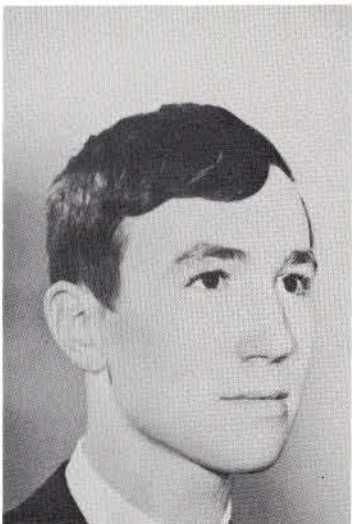
Michael Francis Fiorini

Football 1, 2, 3, 4; Baseball 2; Pep Club  
1, 4; Prom Com. 3, 4.

Musical 4.



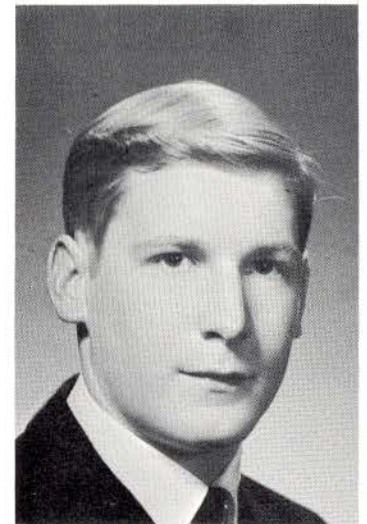
Thomas Cornelius Fitzgerald



John Adam Ford

Prom Com. 3.

Prom Com. 3.



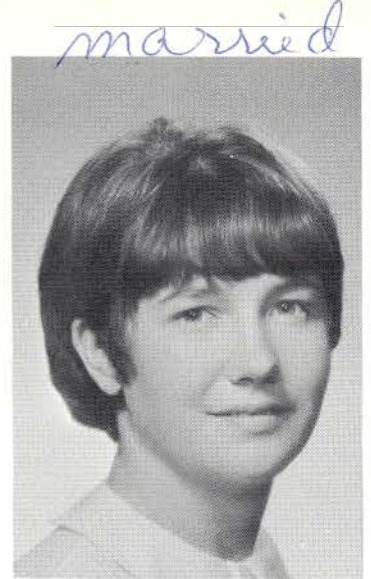
John Joseph Gasson

Genesians 4; Glee Club 1, 4; Echo 4;  
Reflections 4; Science Club 2, 4;  
Student Council 1.



Marion Olive Garneau

Glee Club 1, 2, 3, 4; Reflections 2,  
3, 4; French Club 3, 4; Genesians 4;  
4; Musical 1.



Joann Elizabeth Gelaznik

Glee Club 1; Reflections 4; Musical  
1; Library Ass't 4.



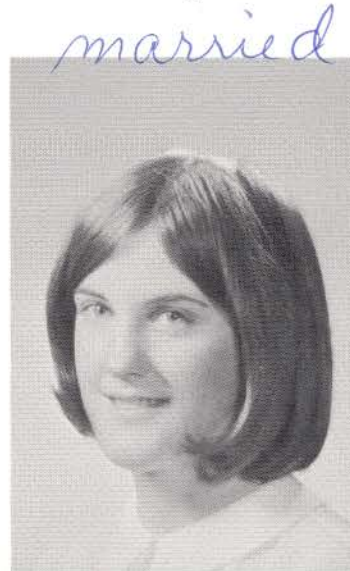
Kathleen Margaret Gilbert

Class Officer 4, (Vice-Pres.);  
French Club 3, 4; Genesians 4;  
Musical 4; Jets 4; Student Council 4.



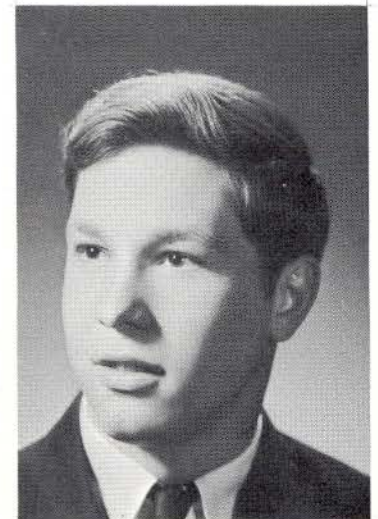
Robert John Gogan

Cheerleading 3, 4; National Honor  
Society 4; Science Club 3, 4; Mem-  
ory Book 4; French Club 3, 4; Art  
Service Club 3, 4.



Karen Ann Hamberg

Prom Com. 3.



Thomas Michael Harper





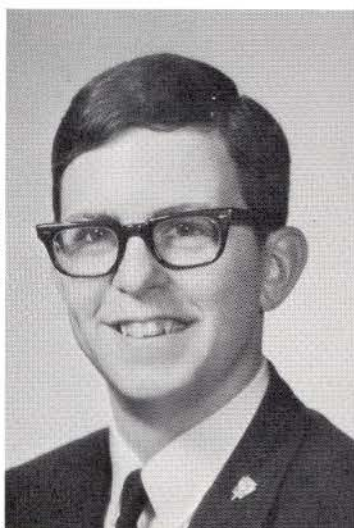
Jane Ellen Haughey



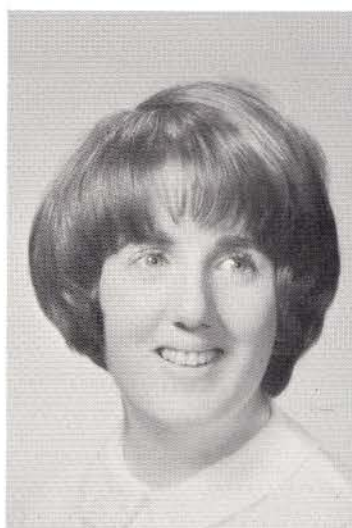
Margaret Mary Hayes

*married*  
Glee Club 1, 4; Genesians 3, 4;  
Echo 4; Memory Book 4; Musical  
1, 4; Prom Com. 3, 4.

Art Service Club 2, 4, (Vice-Pres.);  
Musical 1, 4; Prom Com. 3.



Michael Joseph Herman



Anne Theresa Hynes

Class Officer 3, (Vice-Pres.), 4  
(Pres.); Debating 3, 4; National  
Honor Society 3, 4; Student Coun-  
cil 3, 4; Genesians 4; Rotary Club's  
Service Above Self Award.

French Club 3; Echo 3, 4; Memory  
Book 4; Science Club 3; Art Service  
Club 3; Prom Com. 3, 4.



Mary Elizabeth Johnson

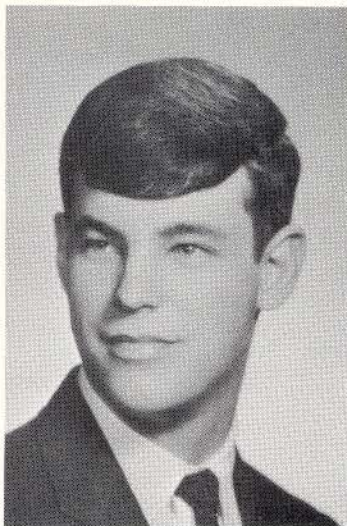


Christine Marie Jones

French Club 2, 3; Genesians 1, 2;  
Glee Club 1, 2; Echo 4; Science  
Club 2, 3; Prom Com. 3, 4.

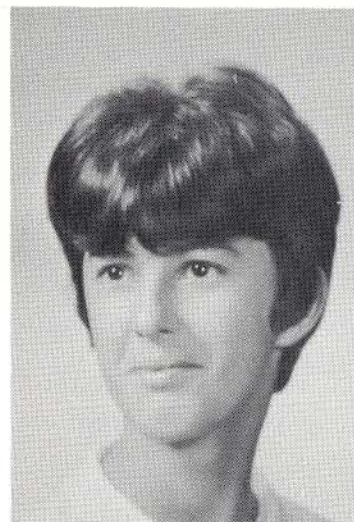
Glee Club 1, 2, 4; Art Service Club  
3; Musical 1, 4; Echo 4; Genesians  
4; Prom Com. 3.





David James Kane

Genesians 4; Prom Com. 3.



Maureen Ruth Kane

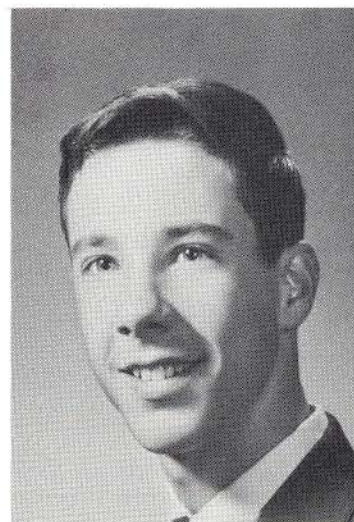
Prom Com. 3; Genesians 4.



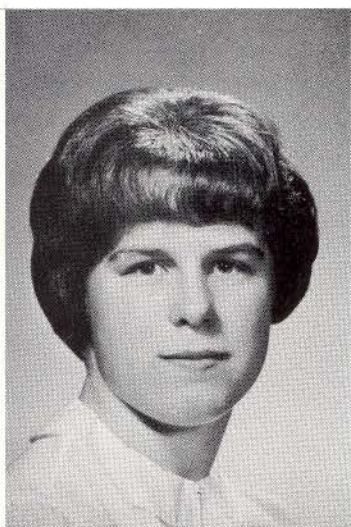
Patricia Mary Kane

Glee Club 1; Spanish Club 3 (Sec.);  
Science Club 4; Prom Com. 3.

Musical 4.



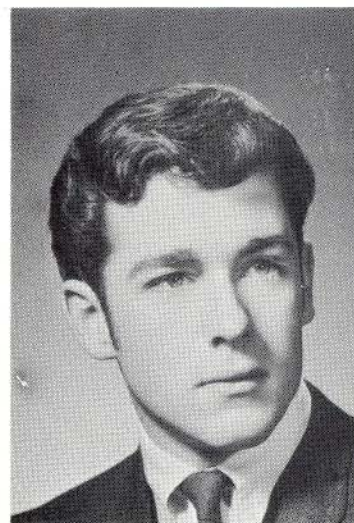
Ronald Francis Kelley



Catherine Marie Kelly

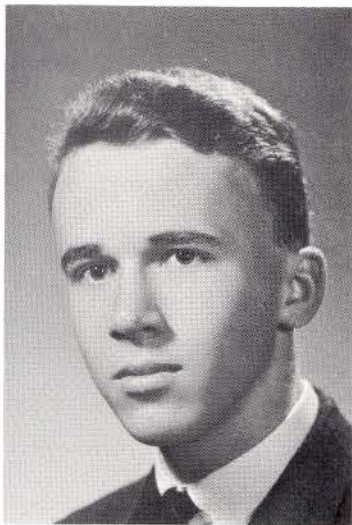
Glee Club 4; Prom Com. 3; Art Service  
Club 2; Library Ass't. 4.

Baseball 1.



Charles Michael Kennedy

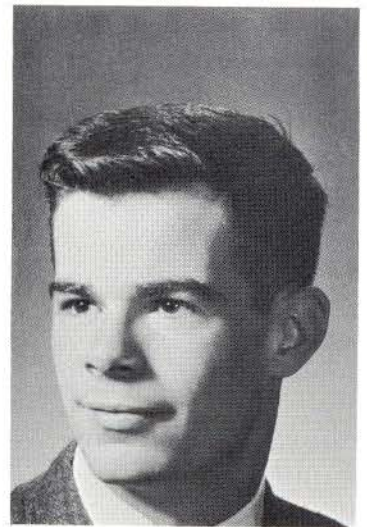




Geoffrey Alan King

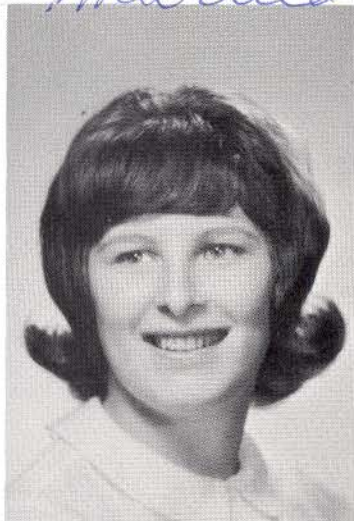
*married*

Glee Club 3, 4; Musical 1, 4; Science Club 1, 2, 3, 4; French Club 3.



Mark Arthur Kline

Baseball 1, 2, 4; Jets 4; Musical 4; Science Club 4; Prom Com. 4.

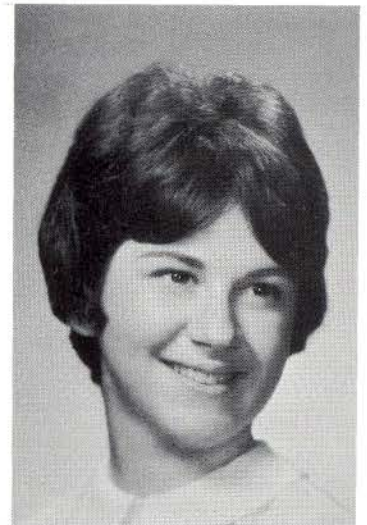


Claudette Caroline Laframboise

*married*

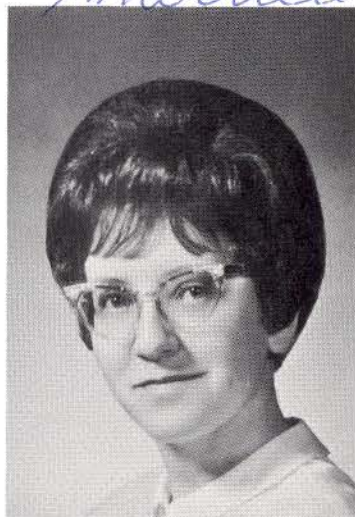
Prom Com. 3.

French Club 3, 4; Genesisians 4; Glee Club 4; Memory Book 4; Musical 4; Pep Club 4.



Patricia Anne Lange

Echo 4; Musical 4; Prom Com. 4.



Angelarose Lucy LaRosa

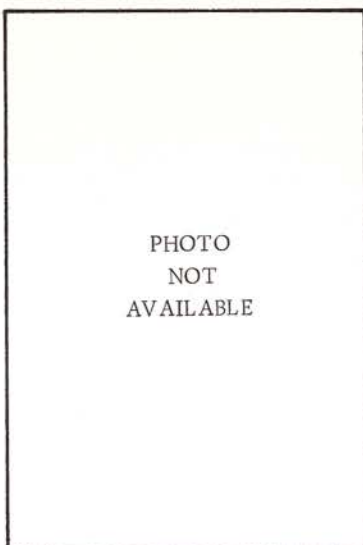
Prom Com. 3, 4; Spanish Club 3.



Cynthia Elizabeth Lennon



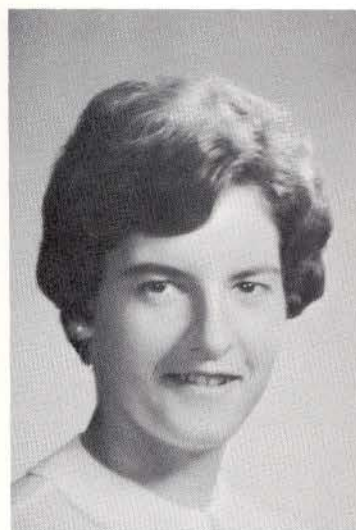
Mary Kathryn Mahoney



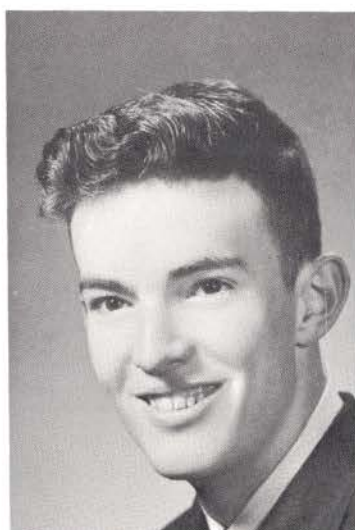
William John Mahoney

Genesians 1, 2, 3, 4; Glee Club 2, 3, 4; Echo 2, 3, 4; National Honor Society 3, 4; French Club 3, 4; Musical 1, 4;  
VALEDICTORIAN.

Prom Com. 4.



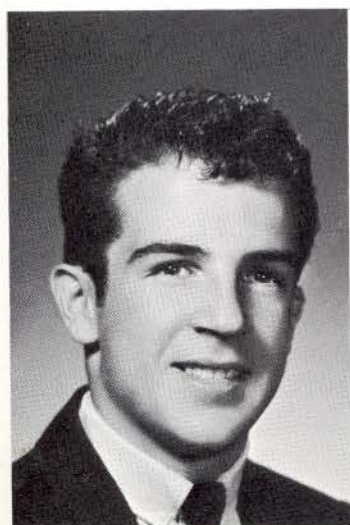
June Frances Marketonis



Daniel Philip Martin

French Club 3; Glee Club 1; Musical 1, 4; Memory Book 4 (co-editor);  
Prom Com. 4.

Football 1; Musical 4; Prom Com. 4.



Anthony John Martini



Joseph Francis Marzano

Art Service Club 4.

Jets 4; Science Club 4; Prom Com. 4.

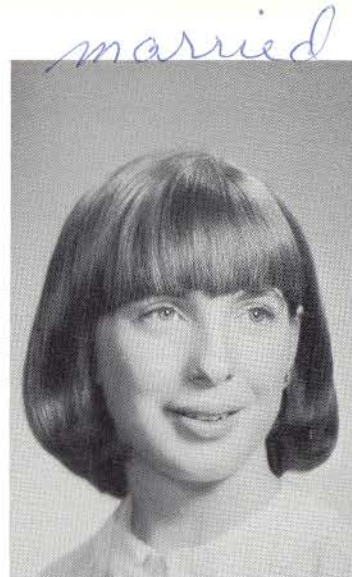


Debating 1, 2; Glee Club 3, 4;  
French Club 3, 4 (Pres.); National  
Honor Society 4; Student Council  
4; Science Club 2, 3.

Cheerleading 3, 4; Class Officer 3 (Sec),  
4 (Sec.); Echo 4; Reflections 2, 3, 4;  
Student Council 1, 3, 4; Musical 4;  
Prom Com. 3, 4.



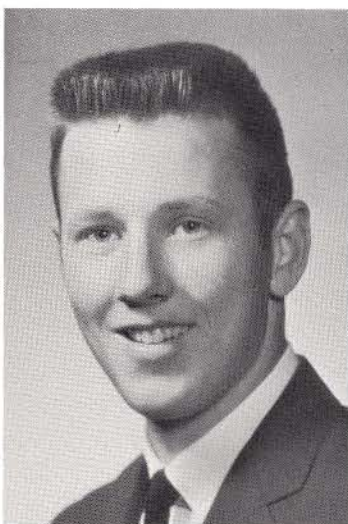
Kevin Robert McCarty



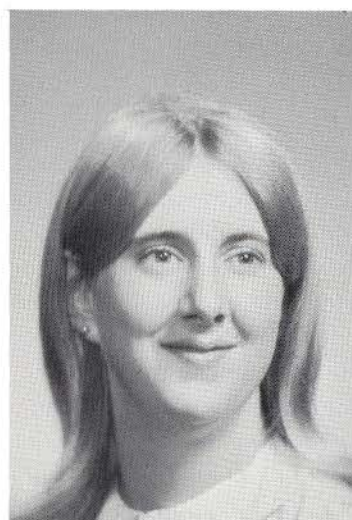
Cheryl Jayne McConnell

Baseball 1, 2; Basketball 4; Musical  
4; Science Club 3.

Pep Club 4; Prom Com. 3.



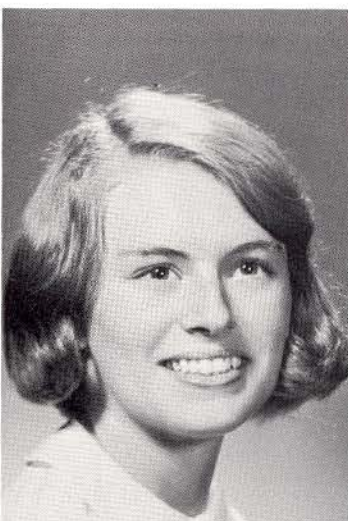
Peter John McCumiskey



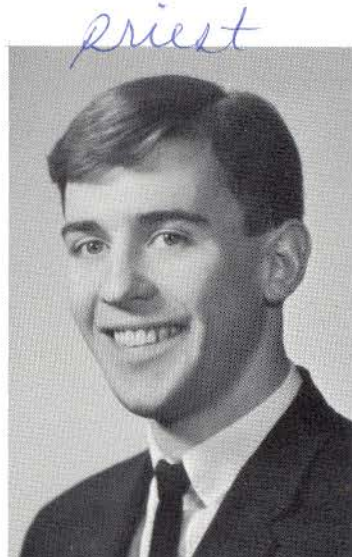
Mary Helen McCusker

Cheerleading 3, 4; National Honor  
Society 3, 4; Reflections 2, 3 (Ed.),  
4 (Ed.); Genesians 3, 4; French Club  
3; Memory Book 4.

Spanish Club 3; Glee Club 3, 4; Jets  
4; Musical 4; Science Club 3; Stu-  
dent Council 1, 2.



Ann Marie McGill



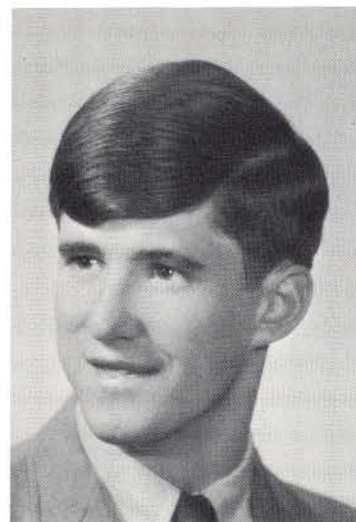
Michael Leo McGuire



John Anthony McKeever

French Club 2.

Debating 4; Genesians 4; Jets 4, (Pres.);  
Science Club 2.



William Douglas Meaney



Carol Colombe Menard

Glee Club 1, 4; Prom Com. 3, 4; Pep  
Club 4.

Glee Club 3, 4; Echo 4; Musical 4; Pep  
Club 1, 4; Prom Com. 3, 4.



Mary Lou Meunier



Helen Elizabeth Miller

Spanish Club 3; Pep Club 1.

Art Service Club 3; Echo 3, 4; Science  
Club 3, 4; Spanish Club 2, 3; Memory  
Book 4; Prom Com. 3, 4.



Katherine Mary Milukas



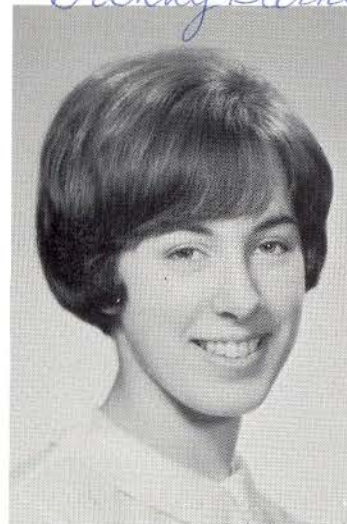


Gloria Jean Miraglia

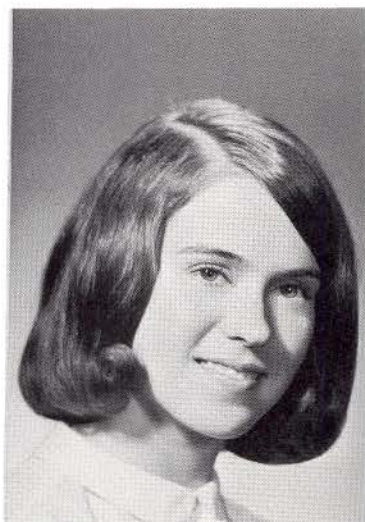
Echo 3, 4; Memory Book 4; Art Service Club 3; Glee Club 4; Musical 4; Prom Com. 3.

Glee Club 1; Echo 4; Pep Club 1.

*engaged to  
Danny Barnini*



Albertine Catherine Monette



Julie Ann Moran

Echo 3; Pep Club 4; Prom Com. 3, 4.

Student Council 3, 4 (Treas.); Science Club 3, 4 (Sec.); French Club 4; National Honor Society 4.



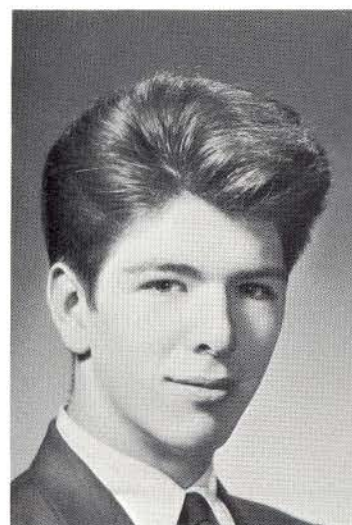
Frankie Laura Moorhead



David Edward Munch

Prom Com. 4.

Basketball 3, 4.

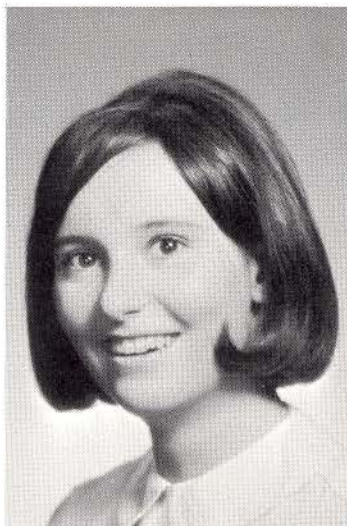


Patrick Timothy Murphy

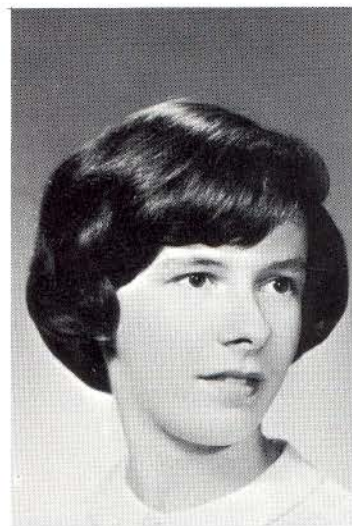


Genesians 3, 4; Glee Club 4; Science Club 3; Memory Book 4; French Club 4; Musical 1, 4.

Glee Club 2, 4; Memory Book 4 (Co-Editor); Prom Com. 3, 4; Pep Club 4.



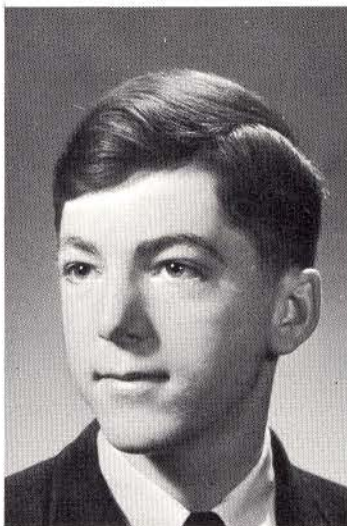
Pamela Irene Nagle



Patricia Ann Nicklaw

Golf 2, 3, 4; Pep Club 1, 4; Prom Com. 3; Spanish Club 3; Reflections 2.

Cheerleading 3, 4; French Club 3, 4; Genesians 2, 3; Glee Club 2, 3; National Honor Society 3, 4; Science Club 3;  
SALUTATORIAN



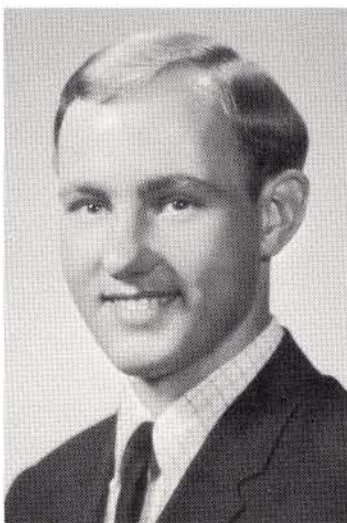
Kevin Brendan O'Hara



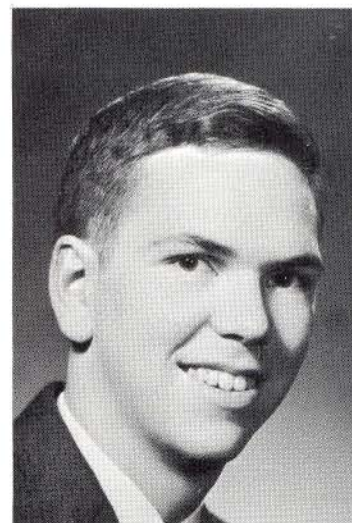
Sheila Ann Paoli

Prom Com. 4.

Jets 4; Science Club 2.

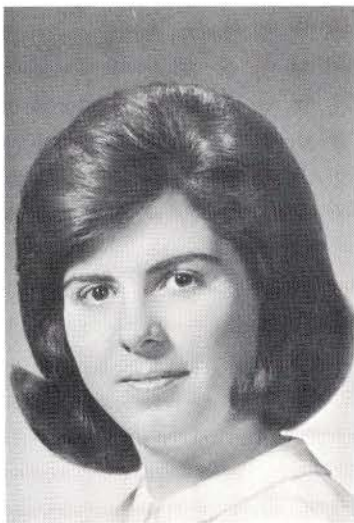


William Henry Peaslee

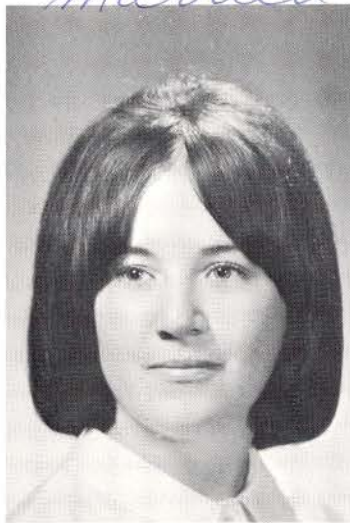


Philip Stirling Peoples





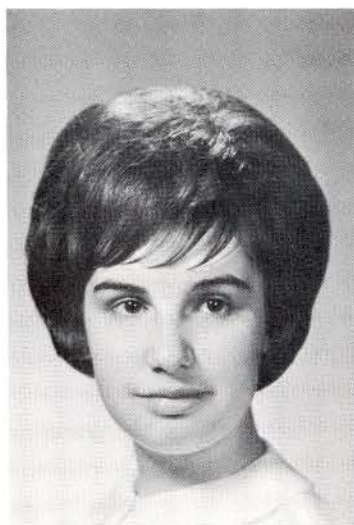
Janet Marie Perrault



Christine Louise Petell

*married*  
Pep Club 4; Prom Com. 3, 4; Dioc. Speech Fest. 2, 3, 4; Mass. Speech Fest. 4.

Spanish Club 3; Echo 4; Pep Club 4; Prom Com. 3, 4.



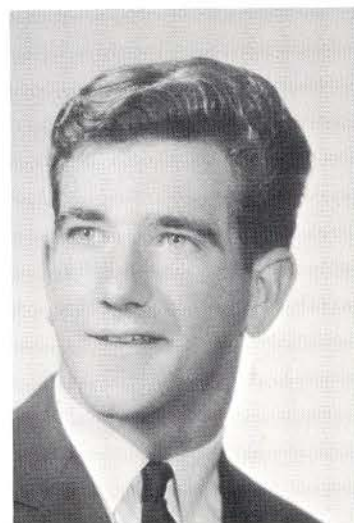
Sharon Rose Piacenti



Dianne Frances Reardon

*married*  
*April 69*  
Glee Club 4; French Club 3, 4; Pep Club 1.

Cheerleading 3, 4; Prom Com. 3.



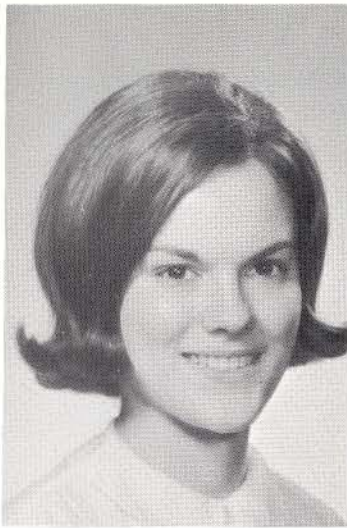
Charles James Reddington



Edward Martin Reilly

Baseball 1, 2, 3, 4; Basketball 1, 2, 3, 4.

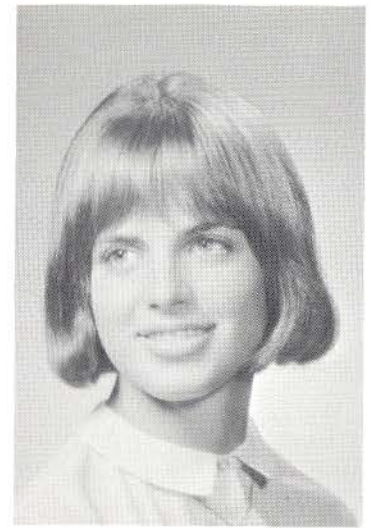
Debating 1, 2, 3, 4 (Pres.); Genesians 1, 2; National Honor Society 3, 4; Science Club 4; Dioc. Speech Fest. 2, 3, 4; Mass Speech Fest. 2, 3, 4.



Kathleen Teresa Reilly

Art Service Club 2; French Club 3;  
Reflections 2, 3; Prom Com. 3; Pep  
Club 4.

Glee Club 1, 2, 3, 4; Memory Book 4;  
French Club 3, 4; Cheerleading 3, 4;  
Science Club 2, 3, 4; National Honor  
Society 3, 4.



Marilyn Cecilia Roulier

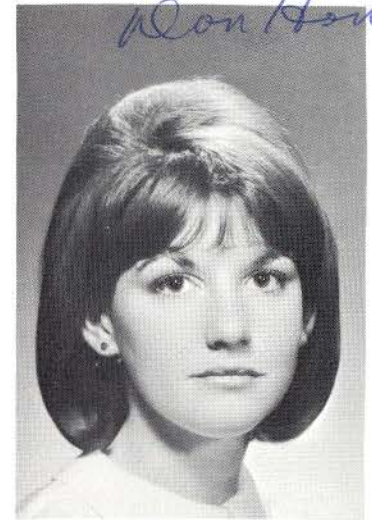
*married to  
Don Hower*



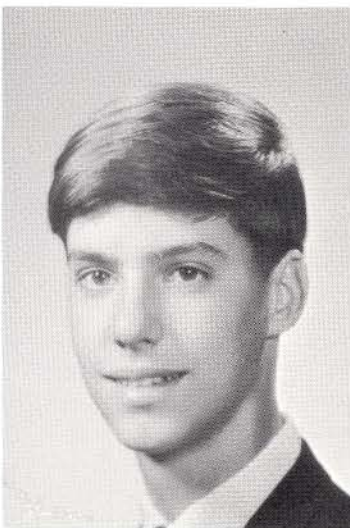
Mary Margaret Ryan

Art Service Club 3 (Vice-Pres.); French  
Club 2, 3; Glee Club 3; Jets 4; Prom  
Com. 3, 4; Pep Club 4.

Art Service Club 3, 4; Spanish Club 3;  
Prom Com. 3, 4; Pep Club 4.



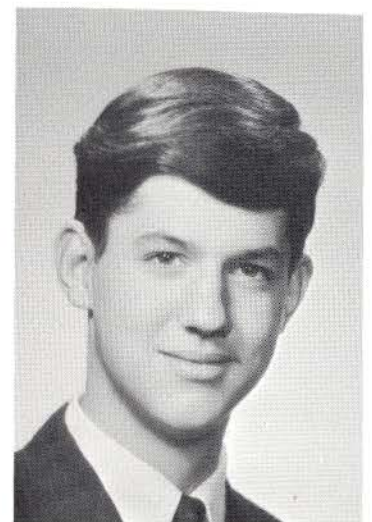
Margaret Mary Schilling



Lee Chester Senk

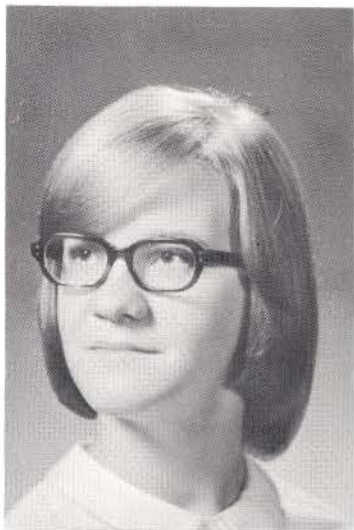
Genesians 4 (Pres.): Memory Book 4;  
Student Council 3, (Vice-Pres.), 4  
(Pres.); Prom Com. 3, 4 (Chairman);  
Science Club 3; Musical 1, 4.

Genesians 4; Musical 1, 4; Prom Com. 3, 4.



Lynn Christopher Senk

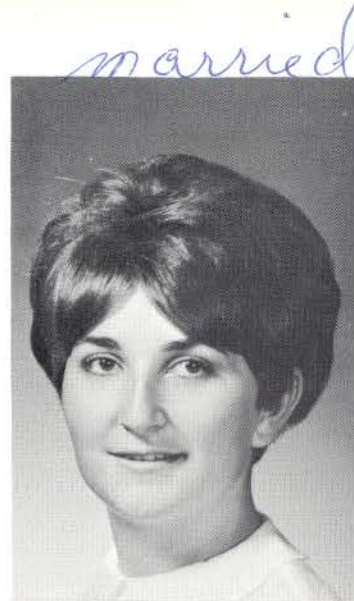




Lynne Mary Shea

Class Officer 3 (Treas.); French Club  
2 (Sec.), 3, 4; Science Club 2, 3, 4;  
Glee Club 2, 3; Student Council 1, 2, 3,  
4; Prom Com. 3, 4.

Glee Club 4; Echo 4; Prom Com. 3;  
Musical 1.



Michele Ann Simon



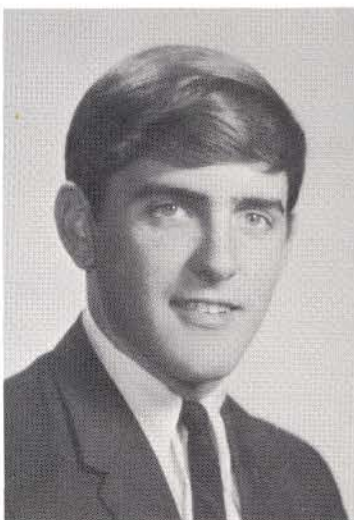
Dennis James Sockey

Jets 4.

Cheerleading 3, 4; Genesians 3, 4; Glee  
Club 2, 3, 4; National Honor Society  
3, 4; Science Club 3, 4; Jets 4.



Margaret Mary Sokop



Stephen Charles St. Peter

Baseball 1, 2; Golf 3; Science Club 2;  
Prom Com. 3, 4.

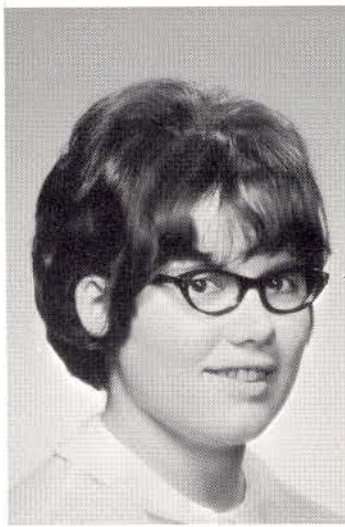
Prom Com. 3.



Margaret Ann Stevenson



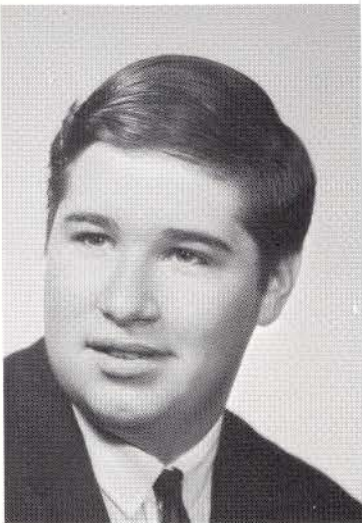
Kathleen Marie Stolberg



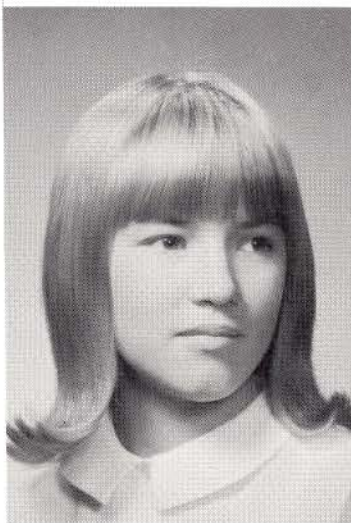
Patricia Lee Strizzi

Prom Com. 3, 4; Musical 1; Pep Club 1.

Cheerleading 3, 4; Genesians 2, 3; Glee Club 2, 3, 4; Echo 4; National Honor Society 3, 4; Reflections 2, 3, 4.



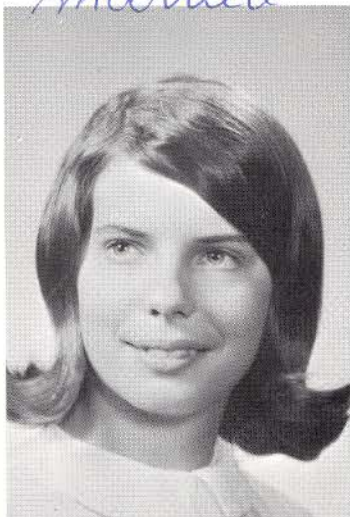
David Fred Strelin



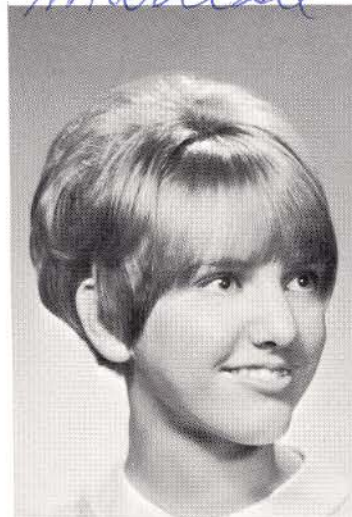
Elaine Katherine Supranowicz

Jets 4; Musical 4; Prom Com. 4; Science Club 4.

Genesians 3, 4; Glee Club 4; National Honor Society 3, 4; Science Club 3, 4; Memory Book 4; Art Service Club 3, 4.



Dianne Marie Sweeney



Theresa Elizabeth Szymanski

Jets 4 (Treas.); Genesians 3; Glee Club 2, 4; Science Club 3; Reflections 2; Art Service Club 4.

French Club 3, 4 (Treas.); Glee Club 1, 2, 3, 4; Memory Book 4; Science Club 2, 3; Musical 1, 4; Student Council 4.

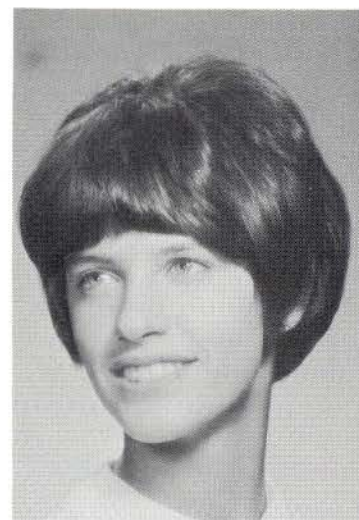


Glee Club 2, 3; Prom Com. 3, 4.

French Club 2, 3; Glee Club 3;  
Jets 4; Art Service Club 3 (Pres.);  
Prom Com. 3, 4; Pep Club 4.



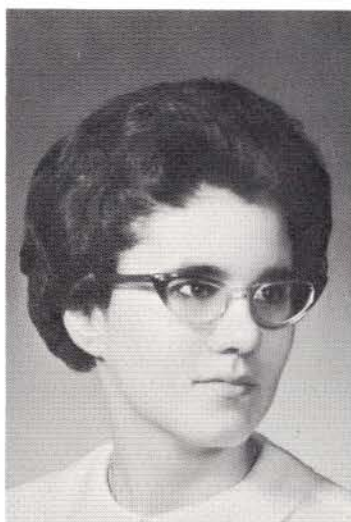
Louise Marguerite Theoret



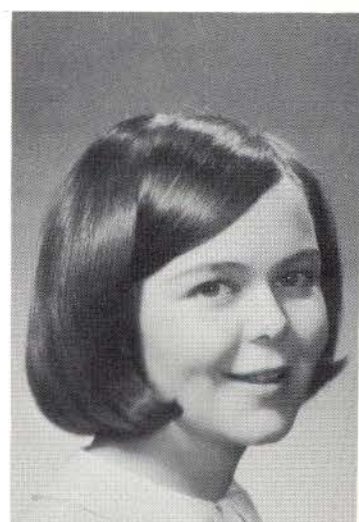
Mary Frances Tietgens

Glee Club 1, 3, 4; Memory Book 4;  
Reflections 2, 3, 4; Science Club 2;  
Prom Com. 3, 4; Musical 4; Rotary  
Club's Service Above Self Award.

Class Officer 4 (Treas.); Genesians  
4; Science Club 3, 4; Student Coun-  
cil 3 (Sec.), 4; Prom Com. 3, 4;  
Pep Club 4.



Mary Margaret Toole



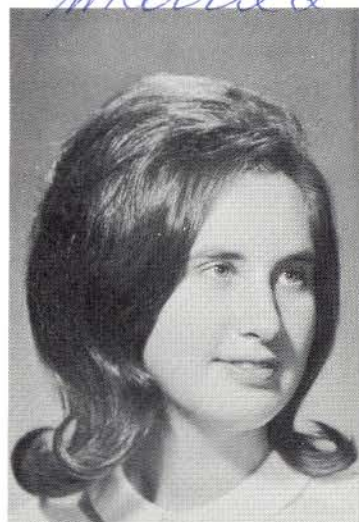
Carol Ann Tuohy

Glee Club 1, 2, 3, 4; Genesians 3, 4;  
Memory Book 4; National Honor  
Society 4; Science Club 2, 3, 4;  
French Club 3, 4.

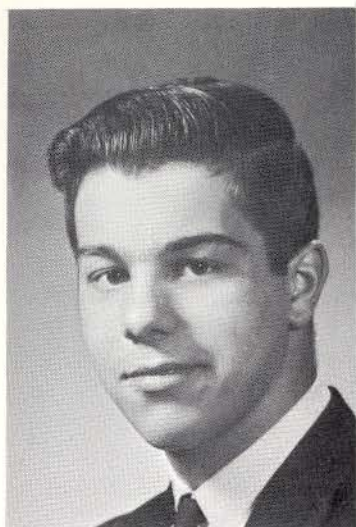
Prom Com 4; Pep Club 1, 4.



Maureen Frances Verchot



Mary Margaret Voltoline



James Walter Wagstaff

Glee Club 1; Spanish Club 2, 3.

Genesians 1, 2; French Club 2; Jets 4;  
Reflections 2, 3; Science Club 3, 4;  
Art Service Club 2, 3.



Daniel Michael Walczyk



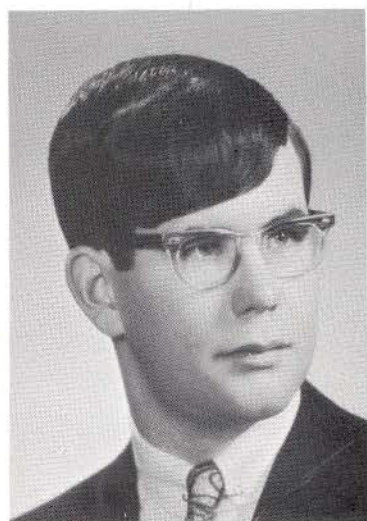
Ann Marie Wallace

Jets 4 (Sec.); Science Club 2; French  
Club 2; Echo 2, 3, 4 (Ed.); National  
Honor Society 3, 4; Memory Book 4.

Jets 4 (Vice-Pres.); Musical 4; French  
Club 3; Science Club 3, 4.



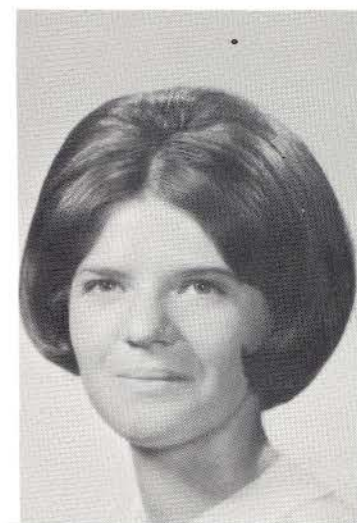
John Francis Warren



John Richard Whalen

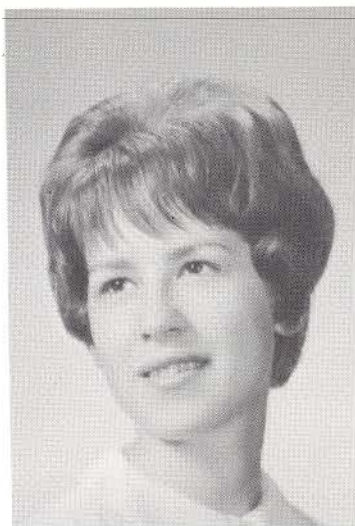
Musical 1, 4; Reflections 4; Prom Com.  
3, 4.

Science Club 2.



Susan Morrison Whitney





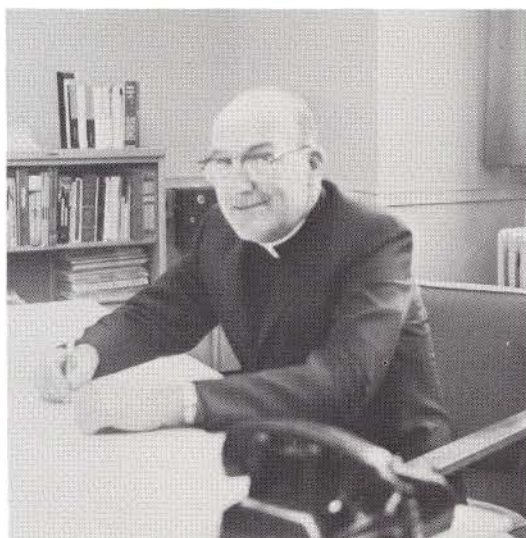
Prom Com. 4.

Art Service Club 2, 3; Genesians 4;  
Glee Club 4.

Olivia Anne Wood



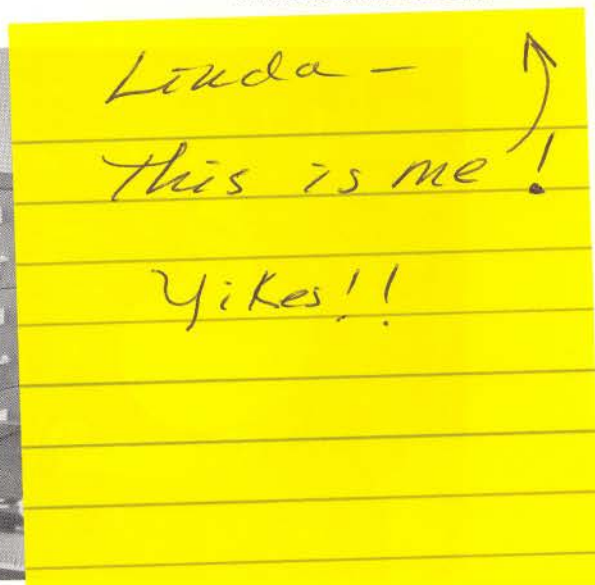
Christine Anne Zaccari



Rev. Raymond A. Lanoue, Director



Sister Mary Constance, Principal



SENIOR TEACHERS — Sisters  
Ceclia James, John Brigid,  
Wilfred Marie and Mary Anita.





Prom Com. 4.

Art Service Club 2, 3; Genesians 4;  
Glee Club 4.

Olivia Anne Wood



Christine Anne Zaccari



Rev. Raymond A. Lanoue, Director



Sister Mary Constance, Principal



SENIOR TEACHERS — Sisters  
Ceclia James, John Brigid,  
Wilfred Marie and Mary Anita.





JUNIOR TEACHERS — Sisters John Edward, Anna Margaret, Raymond Germaine and Saint Peter.



Mr. Belanger

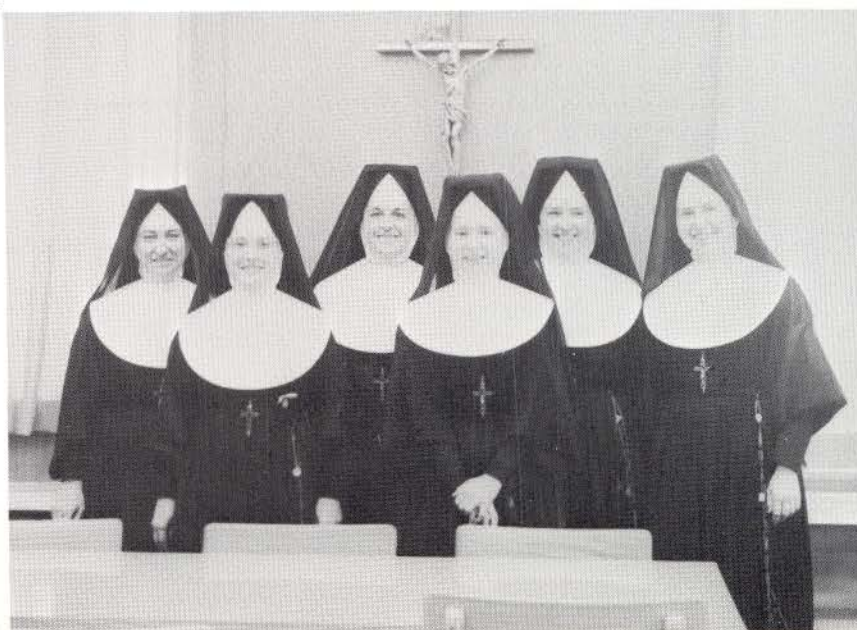


LAY FACULTY — FRONT ROW: Mrs. Giardina, Mr. Pannesco, Mr. Hamilton, Mrs. Barry. SECOND ROW: Mr. Perachi, Mr. Samale and Mr. Potter.



Miss Legault

FRESHMEN-SOPHOMORE TEACHERS — FRONT ROW: Sisters Mary Dorothy and Virginia Maria. SECOND ROW: Sisters Dorothy Francis, Helen Catherine, Elizabeth Theresa and Theresa Florence.



*We have been friends who  
sailed together . . .*

# A C T I V I T I E S





The cast of the Senior Class Play,  
"THE COURTSHIP of EDDIE'S  
FATHER".



Seniors perform in the Genesian Play "The Wall".



Bette Baumann, Lynne Shea, Mike Herman, and Lee Senk execute a dramatic scene professionally.





Just the beginning of rehearsals for "My Fair Lady", are Terry Szymanski, Mike McGuire, Nancy Skowron, and Kevin McCarty.



Tom Fitzgerald, Geoffrey King, and James Harrison get ready for a song with John Burke.



Mike McGuire as "Mr. Higgins" and Tina Jones as his "mother".

Jim Barry, John Burke, and Lee Senk display a new dance step during "A Little Bit of Luck".







Ann McGill, Carol Amstutz, and Diane Sweeney decorate the picture background.



Maureen Verchot, Jimmy Barry, and Elaine Supranowicz put finishing touches on the pagoda for our prom "Sayonara".



Members of the court with their escorts at our Senior Prom, "Sayonara".



Marg Sokop and Ann McGill complete the shrine for Our Lady.

Our radiant Valentine Queen, Louise Theoret.







Cheryl McConnell and Michael Herman lead the class to the stage for Class Day exercises.



Seniors dance to the tune of the "Embassy Waltz", observed by Sisters John Edward and John Brigid.



Class Day at Eastover.



Sheila Paoli, Salutatorian, and Mary Kay Mahoney, Valedictorian, giving their addresses on Graduation Night.





Lori Bradford and Chris Zaccari help boost school spirit.



Even stuffed animals cheer for St. Joe!



Bishop Weldon blesses graduates at our commencement exercises.

*. . . Through quiet waters  
and stormy weather.*

S

P

O

R

T

S







KNEELING: Jack Clark, Tom Doyle co-capt. STANDING: Tom Lange, Dan Powers, Buddy Reddington, Moses Connolly, Tony Simonelli, Pete McCumiskey, Paul Perachi, Coach; Chip Connors, Pat Murphy, Kevin Connolly, Jim Clark and Jim Reid.



Trophies and jackets are presented at the Annual Basketball Banquet.

Jack Clark soars high into the air for a basket.



The Victorious Crusaders cry "we're number one" after taking the NBL.



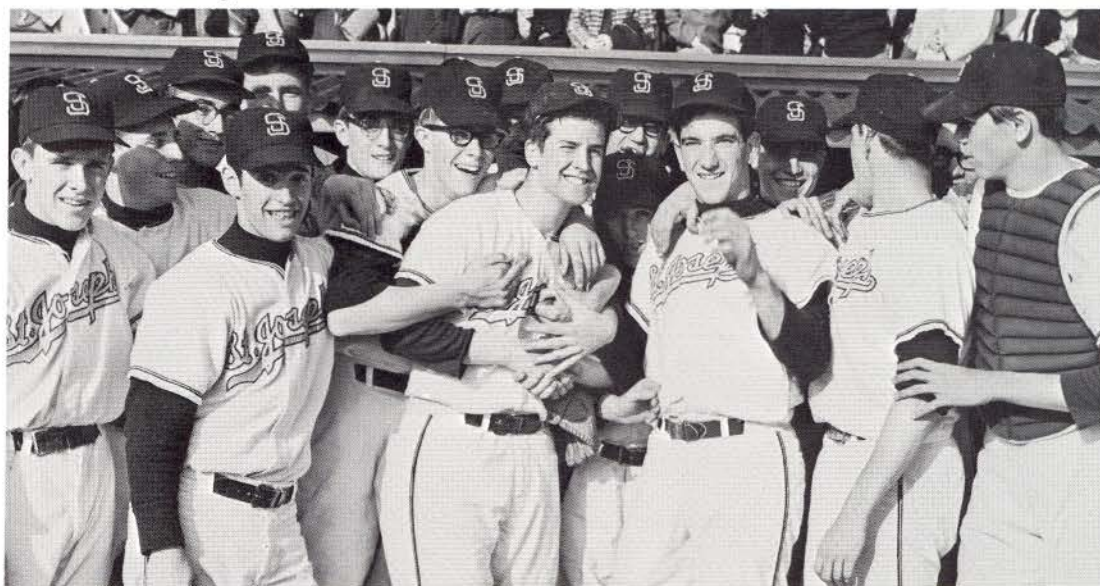




Two St. Joe players show glee over one of this season's games.



Moses Connolly makes base just in time.



The baseball team is jubilant over their win.

Tommy Doyle is calling Buddy Reddington safe as he makes base just in the nick of time.







The football team poses here after fighting hard all season.





The football team poses here after fighting hard all season.